

**The 2020 Plan for
Meadow, Field and Trail
Maintenance in Webster**

**Presented by
The Friends of Webster Trails
in Cooperation
with
Webster Parks and Recreation**

Meadow, Field and Trail Maintenance In Webster

Introduction: FWT wishes to partner with the Town to institute responsible practices for maintenance of our trails, meadows and fields. The following document sets forth recommendations of the FWT board for this work.

Keeping meadows and fields open requires the removal of woody plants either by mowing or by hand. Several sources say that the health of the grass^{1,2,3} is enhanced by periodic mowing. These activities should be carried out in a manner that pleases Town resident users, nurtures native wild flowers and does not disturb nesting birds. As noted below, any mowing should occur in April or early September .

In the course of maintaining Open-Space in Webster, two types of activities are needed: keeping meadows and fields open and providing trails through grassy and weedy areas.

Mowing Trails: Trails are currently mowed by volunteers and the Town. If the town needs to take over the areas maintained by volunteers, the current schedule should be continued to keep trails open.

Trails should be close-mowed.

¹ Transforming Fields in Grassland Bird Habitat, Cornell University Cooperative Extension.

² A Plan for Conserving Grassland Birds in New York: Final Report to the New York State Department of Environmental Conservation Contract #C005137, Mike Morgan and Michael Burger, Audubon New York.

³ Native Prairie: Establishment and Management of Native Prairie, Natural Resources Conservation Service, USDA.

Table 1. Trail Mowing

Trail		Mower	Frequency^b
Gosnell Preserve	Small Meadow and Big Field	Larry Yost	Weekly/biweekly depending on grass growth
	Access from Pellet Road	Neighbor	
WRNP	Orange	Matt Frank	3 week interval
	Black	Matt Frank Ron Happ	3 week interval
	Red	Matt Frank	3 week interval
	Blue	Matt Frank	3 week interval
	Yellow	Matt Frank	3 week interval
	Brown	Dave Mirabella, Matt Frank	3 week interval
	Green	Dave Mirabella Matt Frank	3 week interval
	Whiting Road access	Matt Frank	3 week interval
Hojack	Lake-Vosburg	Bud Gearhart	Weed whip as needed
	Vosburg-Drumm (east end)	Parks/Rec	Every 3-4 weeks
	Drumm-Van Alstyne	Parks/Rec	Every 3-4 weeks
	Van Alstyne-Klem	Parks/Rec	very 3-4 weeks
	Klem-Hard	Neighbor	
	Hard-Holt	Neighbor	
	Holt-NorthPonds- Webster Road	Parks/Rec or Hgwy.	Twice yearly
	Webster Rd. - Phillips	Parks/Rec or Hgwy.	Twice yearly
Chiyoda trail edge		Parks/Rec	As needed
Four Mile Creek (parking area)		Dennis Kuhn	As needed

a. At personal expense of time, equipment and gas.

b. Depending on grass growth

Meadow and Field Maintenance: Areas of concern in the Gosnell Big Woods Preserve are the Big Field and the Small Meadow. In WRNP, there are the South Field, the North Field, the Lake View Field (at the intersection of Lake and Whiting Roads) and several meadows along the Red Trail (between the orange trail N & S).

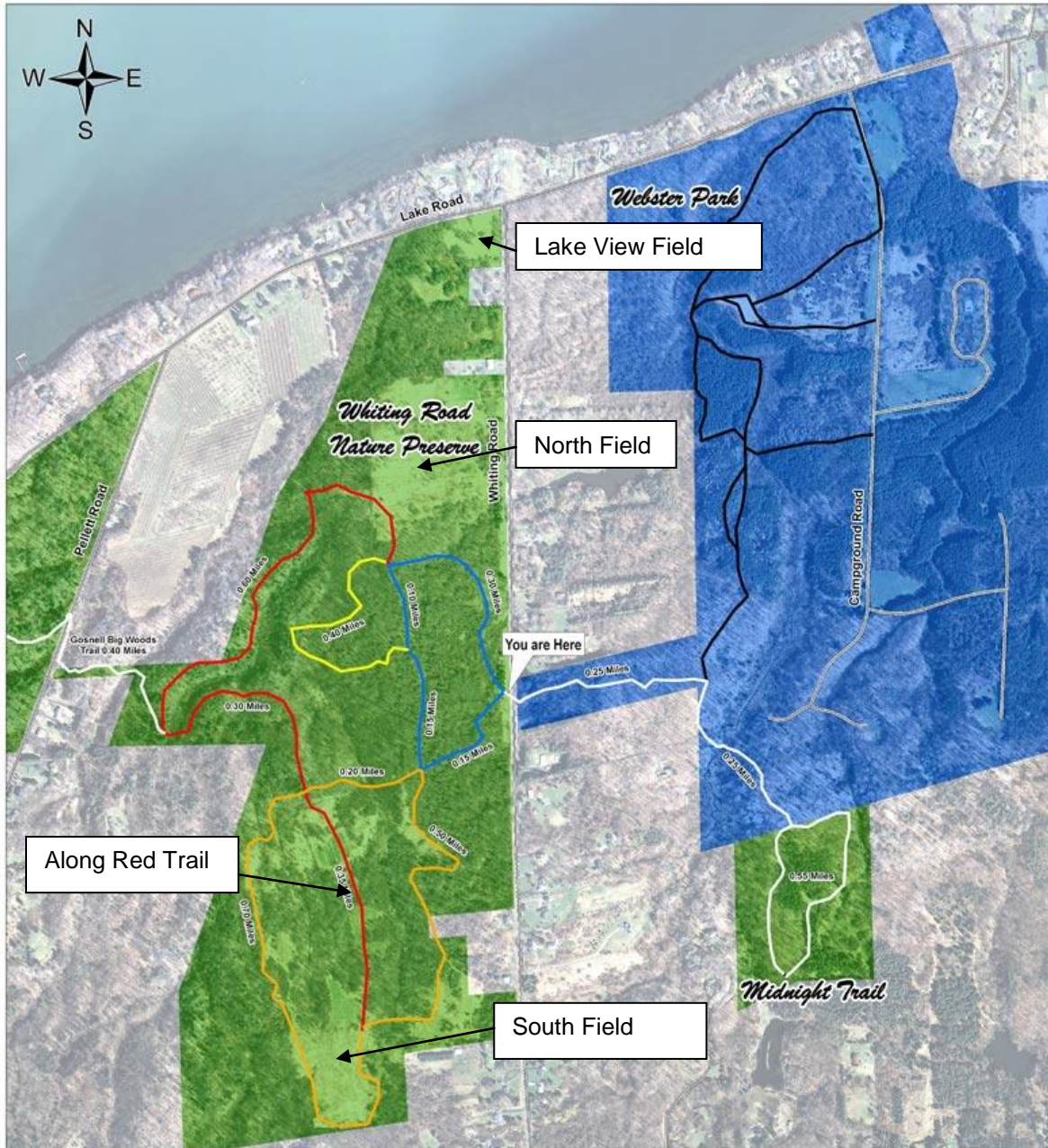
The following guidelines should be followed:

- In order to avoid the breeding season of birds, to maximize enjoyment of blooming wildflowers and to allow completion of butterfly life cycles, any mowing should be as late in the season as possible
- Edges should be mowed (or bush-hogged), as needed, to remove woody plants
- The whole field should be mowed all at once yearly. Mowing should be at a height of 4-6 inches ^{Ref. 1,2}.

Table 2. Meadow and Field Mowing

Area	
Gosnell Small Meadow	Parks/Rec, yearly in September
Gosnell Woody encroachment along edges	Parks/Rec, yearly in September
Gosnell Big Field	Parks/Rec, yearly in September
WRNP South Field	Parks/Rec, yearly in September
WRNP North Field	Parks/Rec, yearly in September
WRNP Lake View Field	Parks/Rec, yearly in September
WRNP Meadows along Red Trail	Parks/Rec, yearly in September
Woody encroachment along field edges at WRNP	Parks/Rec, yearly in September and as needed, earlier
Along Whiting road and trail access to WRNP	As needed

Meadows and Fields: Whiting Road Nature Preserve



Meadows and Fields: Gosnell Big Woods Preserve

